

## ADVANTAGES

- » The pipe flow is not affected
- » Simple subsequent installation by changing the gasket
- » No “trouble spots” (potential leaks) appear along the pipe section
- » Installation is possible at any flange connection
- » KemTherm is weatherproof

## WE ARE THERE FOR YOU!

If you are interested in personal advisement by our sales force, please make an appointment with us.

Here you will find an application video:



2020 Edition | Printing and typesetting errors excepted

KLINGER Kempchen GmbH  
Im Waldteich 21, 46147 Oberhausen  
Tel: +49 208 8482-0 » Fax: +49 208 8482-285  
info@klinger-kempchen.de

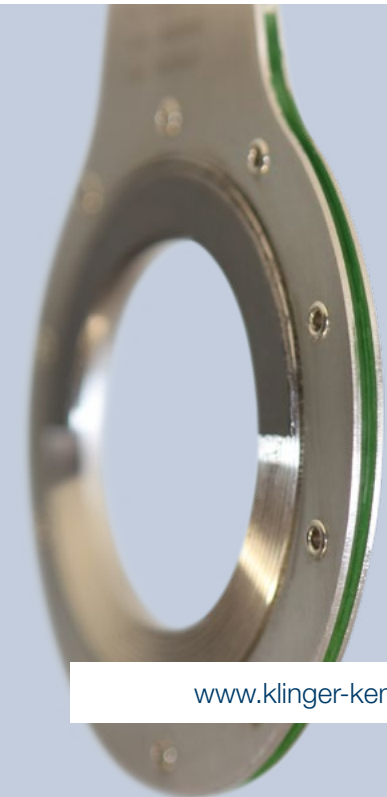
[www.klinger-kempchen.de](http://www.klinger-kempchen.de)



## KEMTHERM WITH ATEX APPROVAL

Developed for your safety!

- » Exact measured values
- » No influence on pipe flow
- » Easy assembly



[www.klinger-kempchen.de](http://www.klinger-kempchen.de)

## FUNCTION

KemTherm is available as a grooved gasket type B15T. A thermal element is integrated into the carrier core, which makes it possible to measure the temperature over the entire 360° circumference. The temperatures are recorded and made available as averaged values.

## APPLICATION

If the temperature is to be measured in a pipeline system, this can currently be done with the aid of a built-in sensor or a contact sensor. Both variants have specific disadvantages. An immersion sensor is extremely complex to install and disrupts the pipe flow.

A contact sensor is very strongly dependent on the ambient conditions and delivers very imprecise measured values. KemTherm has none of these disadvantages.

KemTherm is very easy to install at any point of the flange connection, and provides an accurate temperature reading.

KemTherm can be used up to an operating pressure of 160 bar and a maximum operating temperature of 400°C. The gasket can be installed on flange connections with sealing surface shapes A and B according to DIN EN 1092, and shape RF according to DIN EN 1759.

The dimensions of the gasket core do not comply with current standards, but are rather optimised specifically for improved temperature absorption. The overall seal height before installation and centering diameter corresponds to the standard seals of the standards DIN EN 1514 and DIN EN 10260.

## DESCRIPTION

KemTherm is a static seal for standard and non-standard flange connections, with an integrated thermal element for very accurate measurement of the flow medium temperature. The measurement signal can be integrated and processed in all process control systems and can be used to control and regulate processes.



KemTherm B15T fulfill the ATEX guidelines.

Device group: II » Device category: 1, 2, 1/2 G » Zone: 0, 1 » Approval number: IBExU 19 ATEX 1061X